



SONNET Infographic #3

An overview of the six SONNET City Labs including more details about the actions that they took on, and their academic partners.





City of Antwerp

facilitated **four experiments** in the City Lab.



DRIFT

supported the City Lab process, mostly through reflexive monitoring of the whole process.



Energy community in Stalinsstraat



Involved partners:

-  **Energy cooperative** (ZuidtrAnt)
-  **City of Antwerp** (Ecohuis)
-  **Energy system installation company** (Energie-ID)
-  **Social housing corporation** (Woonhaven)
-  **Stalinsstraat citizens**



Rental of energy-efficient household appliances

Involved partners:

-  **City of Antwerp** (Social Services & Ecohuis)
-  **Foundation aimed at doing social projects** (Samen)



Renovation coaching & energy loan

Involved partners:

-  **City of Antwerp**
 - Ecohuis
 - Department of Housing
 - Public Center for Societal Wellbeing
-  **Flemish regional fund** (Noodkopersfonds)



Retrofitting houses for families with lower incomes

Involved partners:

-  **Social housing corporation** (Collectief Goed)
-  **City of Antwerp**
-  **Energy cooperative** (ZuidtrAnt)



Bristol City Council

investigated the possibility of using a Community Municipal Bond mechanism to finance the energy efficiency works in community buildings



Sussex University

supported the City Lab process, especially the co-creation and review of the survey



Community buildings



Bristol Energy Network



Building managers

BEN conducted building manager survey to determine what energy efficiency improvements need to be made

Citizens

BEN conducted citizen survey to find out if people are interested in retrofit of community buildings through CMB



City of Grenoble

facilitated four experiments in different types of buildings.



Grenoble Ecole de Management

supported the City Lab, mostly through reflexive monitoring of the whole process

The four experiments were aimed at raising awareness among the building users on how they can change their energy habits and save energy in the buildings.

Association using the municipal buildings



Municipality



Charter for eco-responsibility

Administration building "Claudel"



Staff



Posters, card games on energy efficiency

Elisée Chatin primary school



Teachers, Building Managers



Posters on how to better save energy

Community Centre "Bois d'Artas"



Members



Energy Action Plan





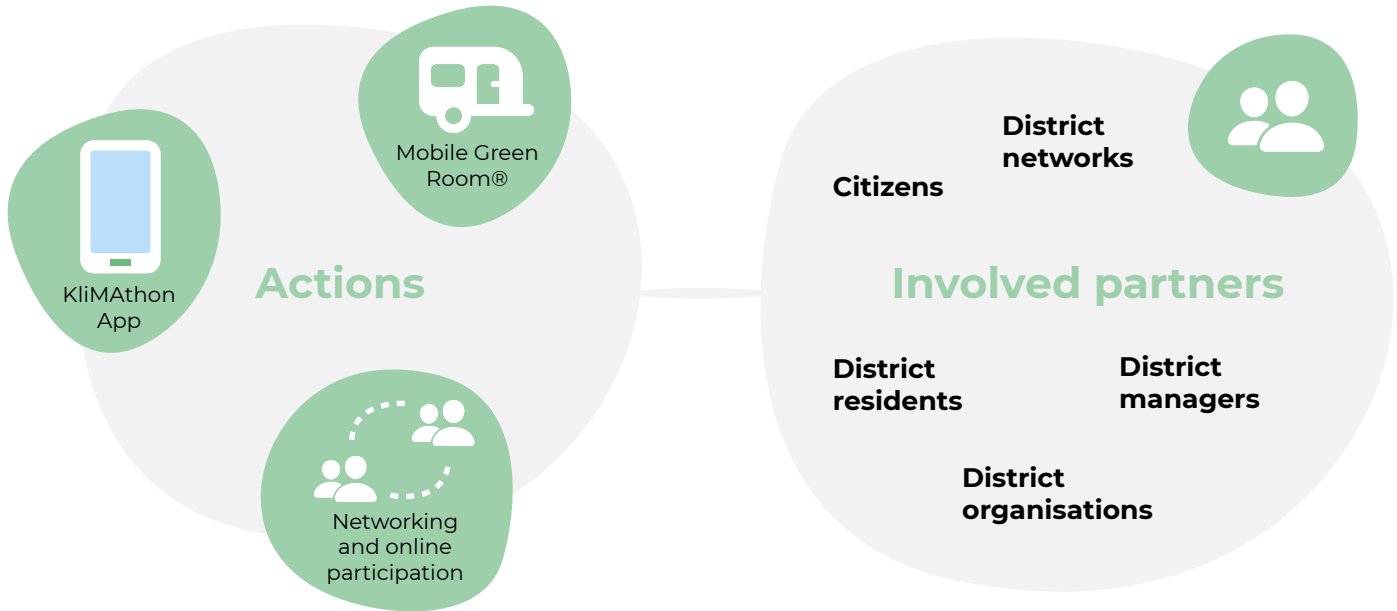
City of Mannheim

facilitated the experiment in the district of Neckarstadt-West and engaged diverse partners in the process.



Fraunhofer Institute

supported the City Lab, mostly through reflexive monitoring of the whole process.



City of Warsaw

initiated the City Lab experiment, brought partners together and monitored the results.



Naatu Operator

installed smart meters to monitor energy consumption in 11 households.



For six weeks, participants received advice on how to better save energy in their houses.

Kozminski University

actively supported the City Lab process, analysed the data collected in households and developed conclusions.



Feedback



Final conclusions and recommendations



City of Basel

supported the initial set-up and scoping of the process.



Zurich University of Applied Sciences

facilitated, monitored and evaluated the City Lab process.



Industrielle Werke Basel

is a local state-owned energy and water utility



Developed the app



First version of the app

Series of meetings

Literature review



Testing phase: impact of motivational messages

Evaluation of outcomes



Updated version of the app

